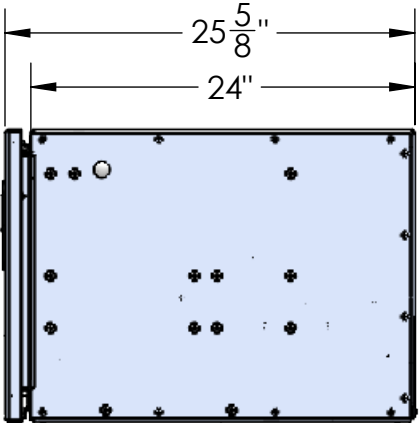
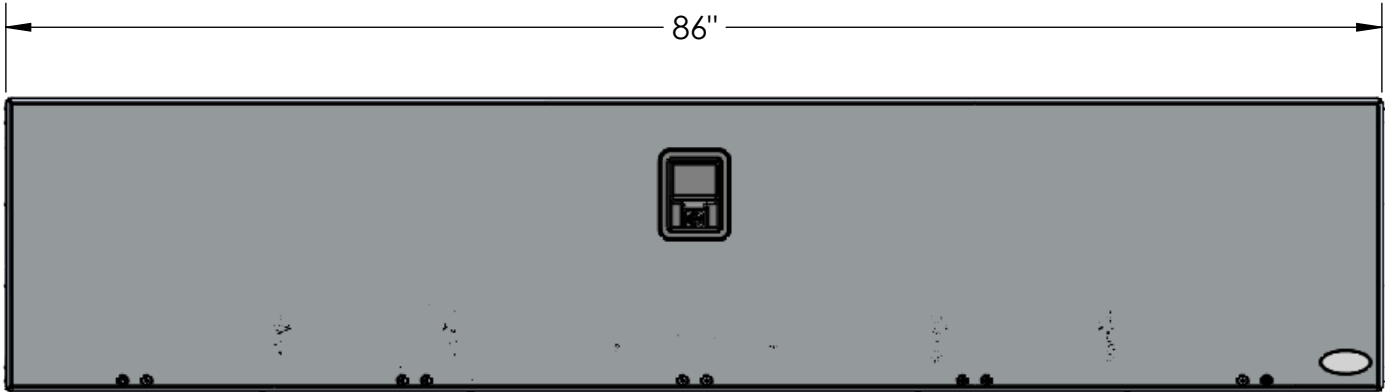
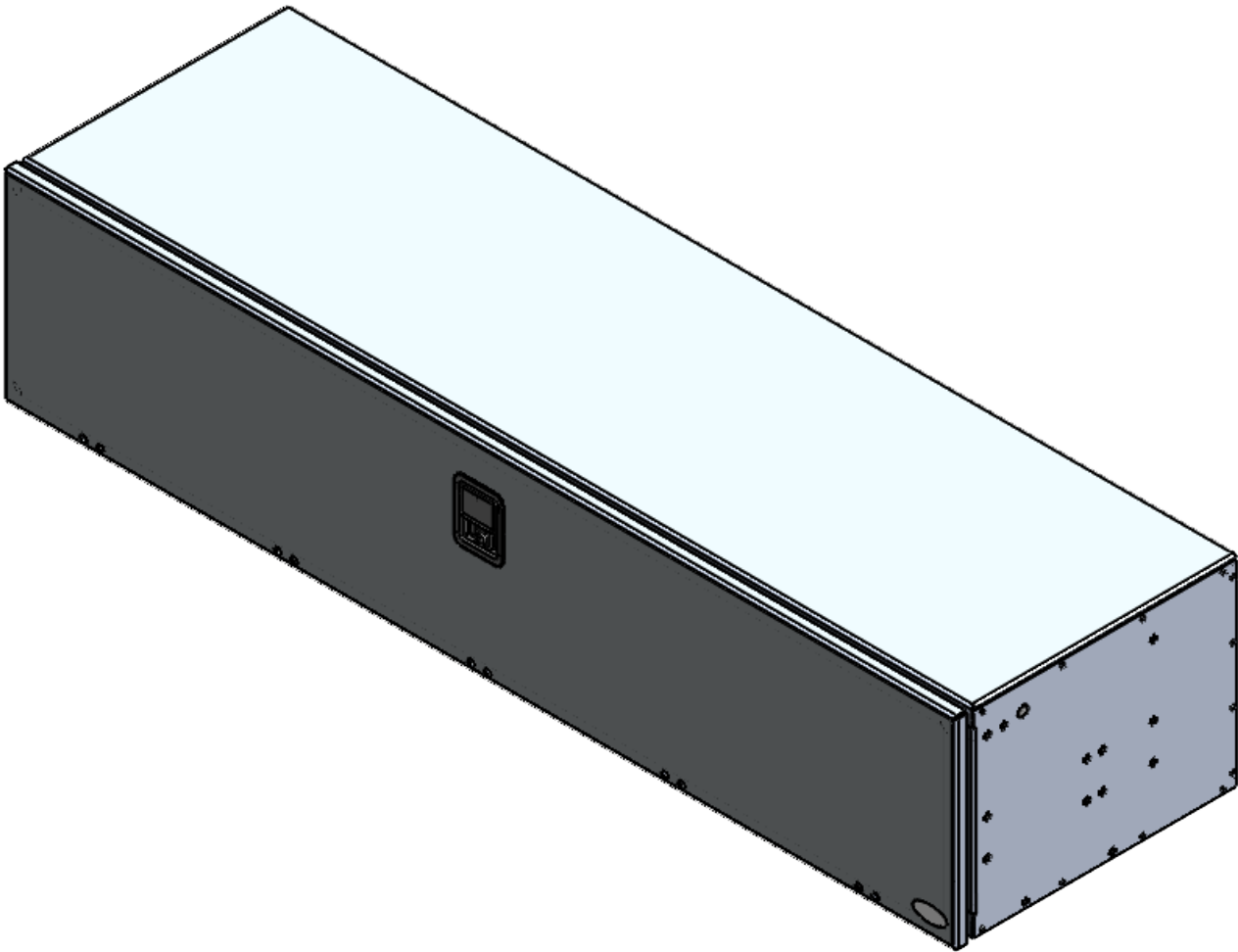


DIMENSIONS - CLOSED



UNLESS OTHERWISE SPECIFIED			NAME		DATE		<div><b>inventive-group</b> One Company, 4 Brands</div>					
TOLERANCES:			DRAWN		WU							
ANGULAR: BEND ± 0.3°			ENG APPR.				TITLE:  THE DOLLY BOX					
FRACTIONAL ± 1/16"												
TWO PLACE DECIMAL ± 0.020"												
THREE PLACE DECIMAL ± 0.010"												
GD&T ASME Y14.5-2018			PROPRIETARY AND CONFIDENTIAL									
TOP LEVEL ASSEMBLY P/N			THE INFORMATION CONTAINED IN THIS DRAWING IS THE SOLE PROPERTY OF INVENTIVE GROUP LLC. ANY REPRODUCTION IN PART OR AS A WHOLE WITHOUT THE WRITTEN PERMISSION OF INVENTIVE GROUP LLC. IS PROHIBITED.									
MATERIAL VARIES							SIZE B		PART NUMBER: ITD25511		REV	
FINISH VARIES							WEIGHT 382.48 LBS					
			SURFACE AREA 44039.30 SQ IN				SCALE: 1:16		DO NOT SCALE DRAWING		SHEET 1 OF 3	

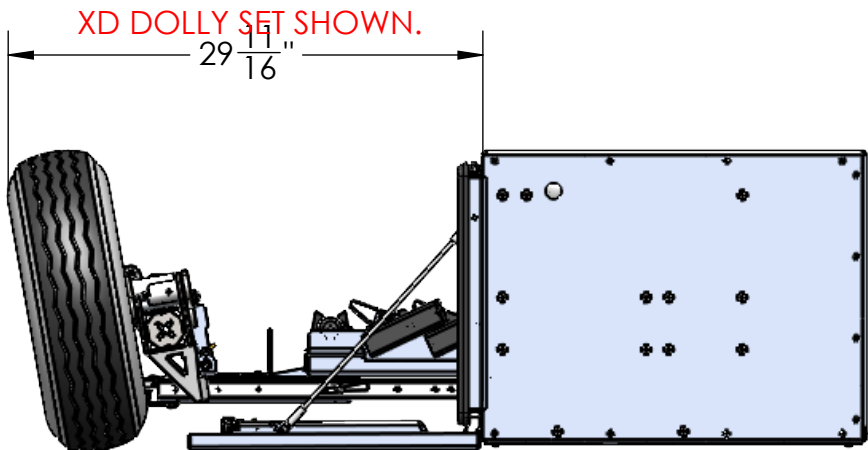
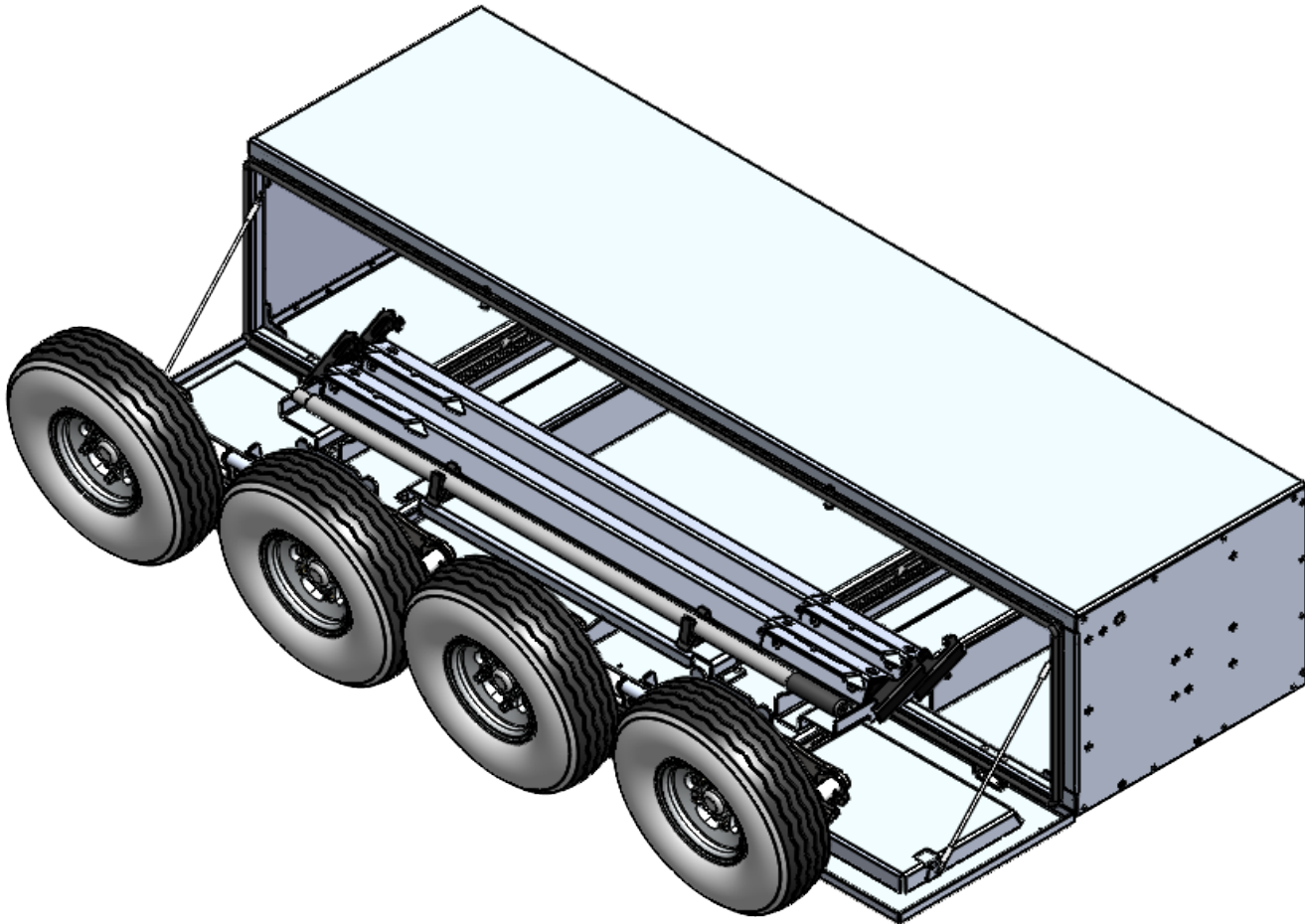
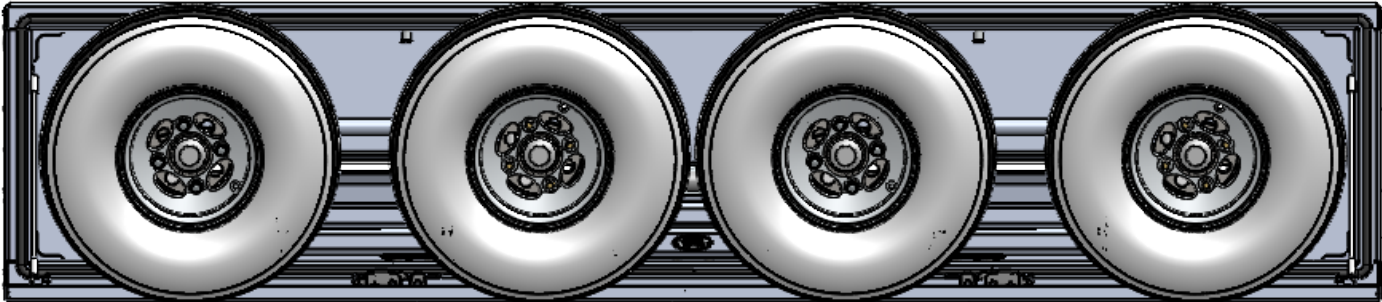
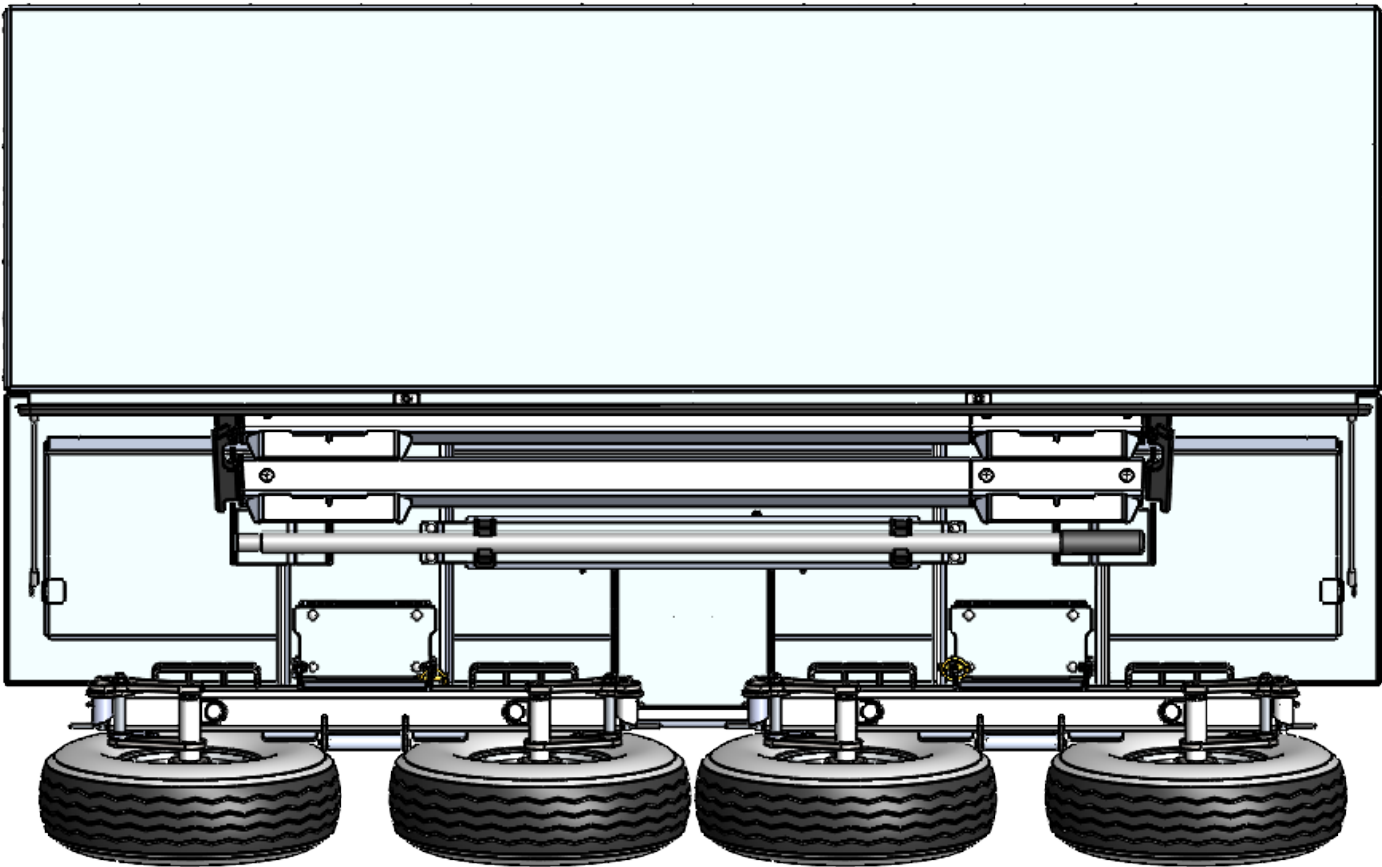
4

3

2

1

DIMENSIONS - OPEN



UNLESS OTHERWISE SPECIFIED		NAME		DATE		<div><b>inventive-group</b></div> <div>One Company, 4 Brands</div>					
TOLERANCES:		DRAWN		WU							
ANGULAR: BEND ± 0.3°		ENG APPR.				TITLE:  THE DOLLY BOX					
FRACTIONAL ± 1/16"											
TWO PLACE DECIMAL ± 0.020"											
THREE PLACE DECIMAL ± 0.010"		PROPRIETARY AND CONFIDENTIAL									
GD&T ASME Y14.5-2018		THE INFORMATION CONTAINED IN THIS DRAWING IS THE SOLE PROPERTY OF INVENTIVE GROUP LLC. ANY REPRODUCTION IN PART OR AS A WHOLE WITHOUT THE WRITTEN PERMISSION OF INVENTIVE GROUP LLC. IS PROHIBITED.				SIZE <b>B</b>					
TOP LEVEL ASSEMBLY P/N											
MATERIAL  VARIES											
FINISH  VARIES		WEIGHT		382.53 LBS		PART NUMBER:  ITD25511		REV			
		SURFACE AREA		44059.62 SQ IN							
						SCALE: 1:16		DO NOT SCALE DRAWING		SHEET 2 OF 3	

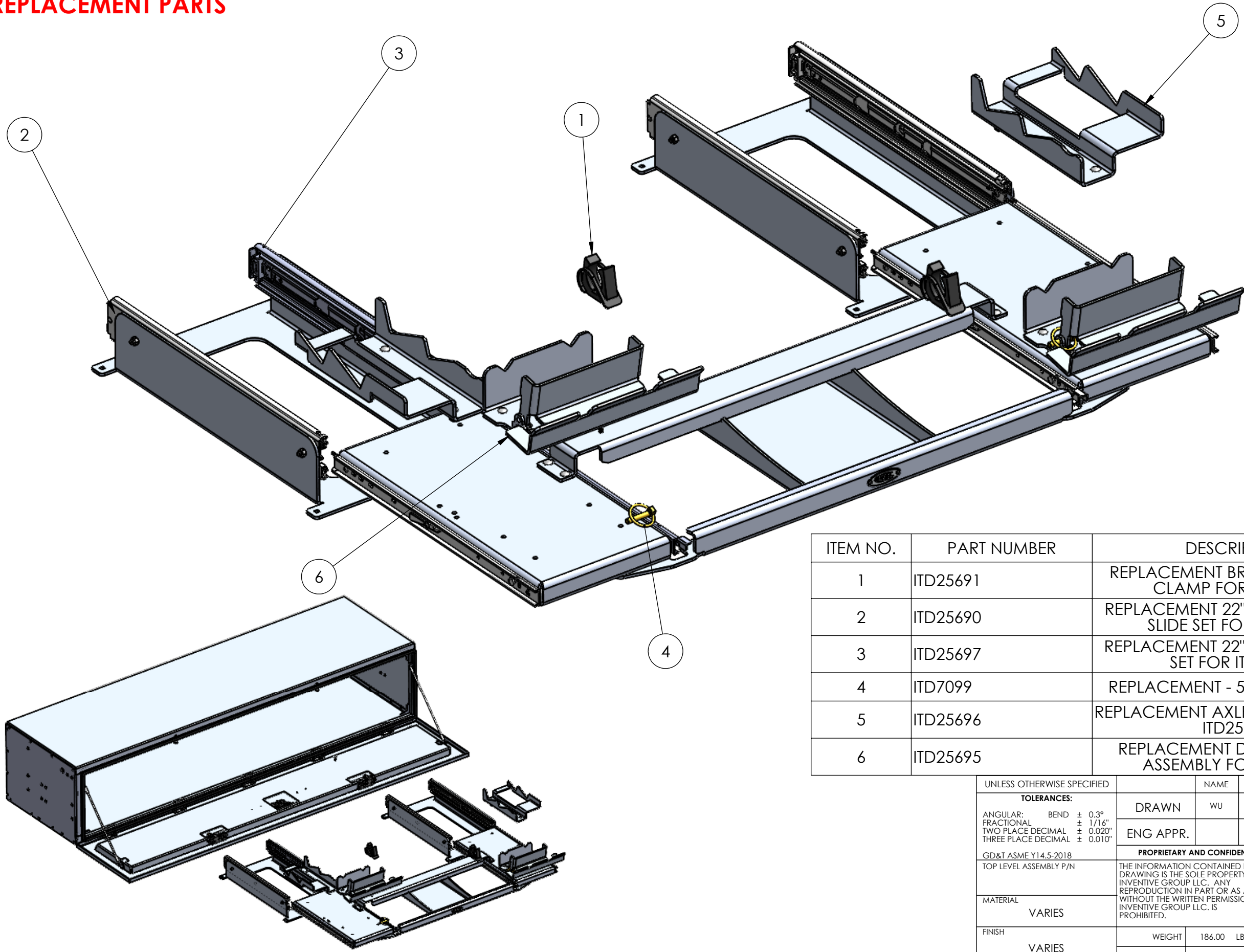
4

3

2

1

REPLACEMENT PARTS



ITEM NO.	PART NUMBER	DESCRIPTION	QTY.
1	ITD25691	REPLACEMENT BREAK-OVER-BAR CLAMP FOR ITD25511	1
2	ITD25690	REPLACEMENT 22" NON-LOCKING SLIDE SET FOR ITD25511	1
3	ITD25697	REPLACEMENT 22" LOCKING SLIDE SET FOR ITD25511	1
4	ITD7099	REPLACEMENT - 5/16" LUNCH PIN	1
5	ITD25696	REPLACEMENT AXLE MOUNT SET FOR ITD25511	1
6	ITD25695	REPLACEMENT DOLLY CRADLE ASSEMBLY FOR ITD25511	1

UNLESS OTHERWISE SPECIFIED		NAME		DATE		<div>inventive-group</div> <div>One Company, 4 Brands</div>					
TOLERANCES:		DRAWN		WU		TITLE: <div>THE DOLLY BOX</div>					
ANGULAR: BEND ± 0.3° FRACTIONAL ± 1/16" TWO PLACE DECIMAL ± 0.020" THREE PLACE DECIMAL ± 0.010"		ENG APPR.									
GD&T ASME Y14.5-2018		PROPRIETARY AND CONFIDENTIAL									
TOP LEVEL ASSEMBLY P/N		THE INFORMATION CONTAINED IN THIS DRAWING IS THE SOLE PROPERTY OF INVENTIVE GROUP LLC. ANY REPRODUCTION IN PART OR AS A WHOLE WITHOUT THE WRITTEN PERMISSION OF INVENTIVE GROUP LLC. IS PROHIBITED.									
MATERIAL VARIES						SIZE B	PART NUMBER: ITD25511		REV		
FINISH VARIES						WEIGHT		186.00 LBS			
		SURFACE AREA		31636.35 SQ IN		SCALE: 1:24		DO NOT SCALE DRAWING		SHEET 3 OF 3	