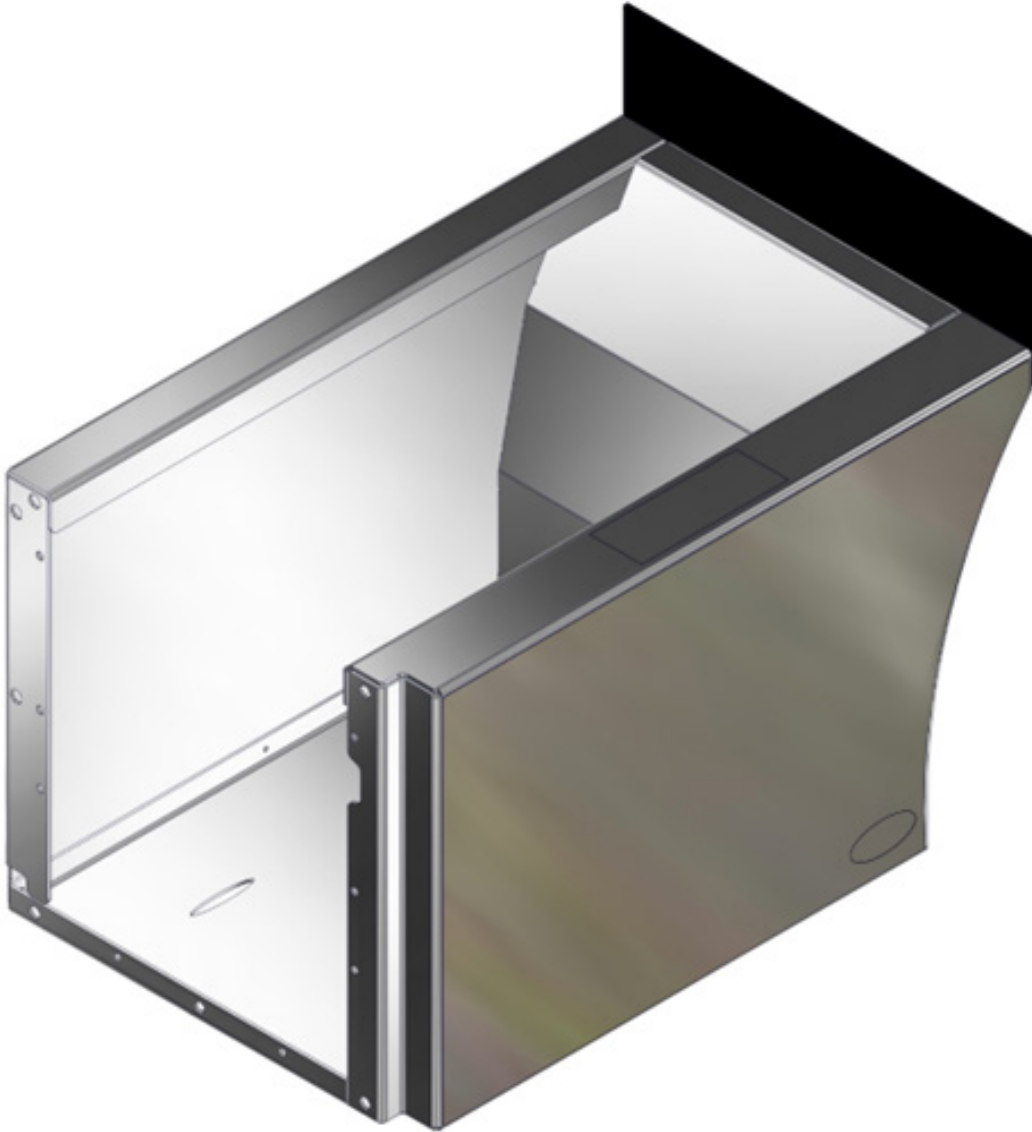




STORAGE™ FENDERS

CONFIGURATION AND INSTALLATION GUIDE



208-587-7960
WWW.INTHEDITCH.COM

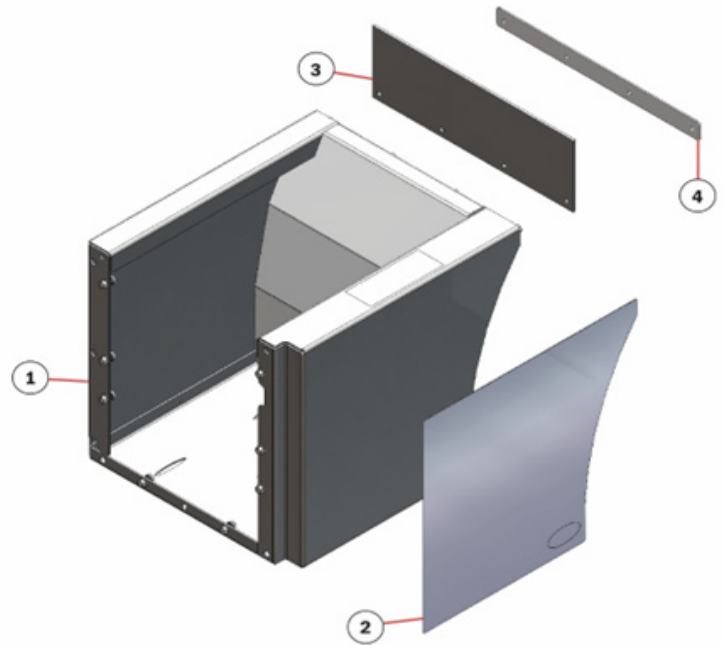
STORAGE™ FENDERS

Part Breakdown

ITEM #	DESCRIPTION
1	Storage™ Fender
2	Stainless Steel Panel
3	Rubber Guard
4	Rubber Guard Backing Panel

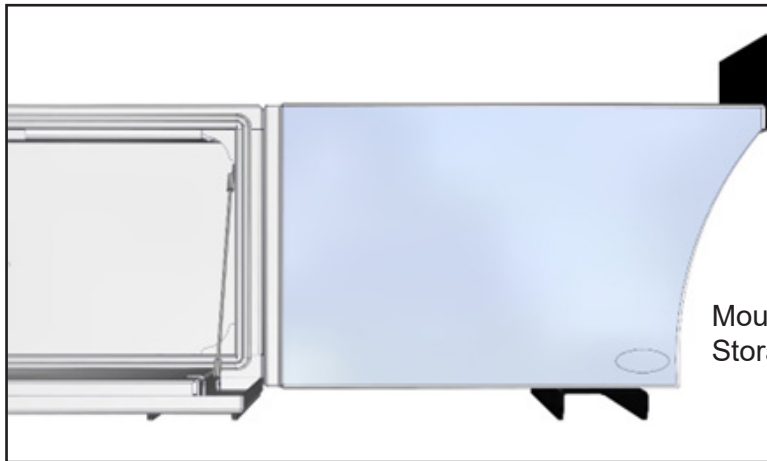
ATTENTION

Stainless Steel products may rust if not properly cared for in extreme conditions. We are not responsible for replacing rusted Stainless Steel if used in extreme environments (such as high in Salt or Chlorine exposure). Do not allow stagnant water to stand on the stainless steel. Always check a small area to see if finish changes before polishing or washing and be sure not to use abrasive cleaners or brushes.



Number of Quick™ Mounts Needed

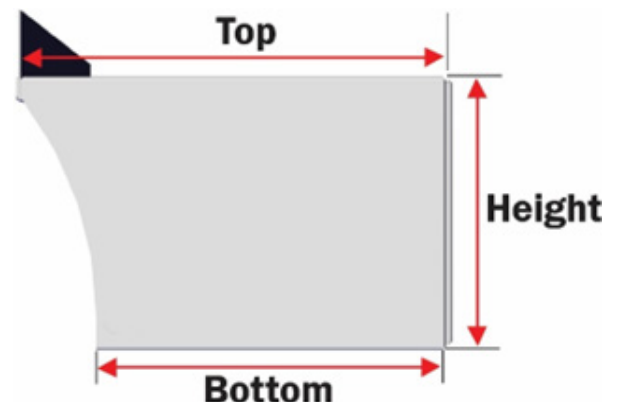
Each Storage™ Fender requires (1) Quick™ Mount for support.



A Minimum of one Quick™ Mount is Required on all Storage™ Fenders.

Mount to be located in the rear half of the Storage™ Fender.

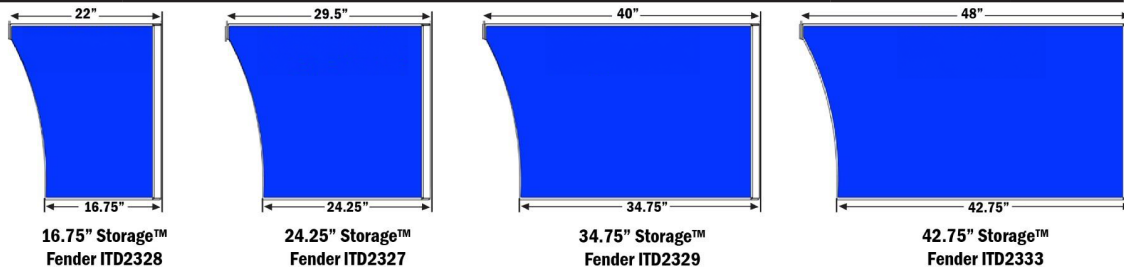
Storage™ Fender Measurement Diagram



STORAGE™ FENDERS

Storage™ Fenders to Choose From:

Storage™ Fenders for use with 20.5" Quick™ Mount (ITD1580)				
PART #	DESCRIPTION	BOTTOM	TOP	HEIGHT
Replacement Parts for 42.75" Storage™ Fenders				
ITD1335 (R-L)	42.75" Stainless-Steel Panel (Specify Right or Left Fender)	42.75"	48"	18.25"
ITD2333	Storage™ Fender Set 42.75" (Includes 1R & 1L Fender with SS Panels Installed)	42.75"	48"	18.25"
ITD1333 (R-L)	Storage™ Fender 42.75" (With SS Panels Installed, Specify Right or Left Fender)	42.75"	48"	18.25"
Replacement Parts for 34.75" Storage™ Fenders				
ITD1334 (R-L)	34.75" Stainless-Steel Panel (Specify Right or Left Fender)	34.75"	40"	18.25"
ITD2329	Storage™ Fender 34.75" (Includes 1R & 1L Fender with SS Panels Installed)	34.75"	40"	18.25"
ITD1329 (R-L)	Storage™ Fender 34.75" (With SS Panels Installed, Specify Right or Left Fender)	34.75"	40"	18.25"
Replacement Parts for 24.25" Storage™ Fenders				
ITD1308 (R-L)	24.25" Stainless-Steel Panel (Specify Right or Left Fender)	24.25"	29.5"	18.25"
ITD2327	Storage™ Fender 24.25" (Includes 1R & 1L Fender with SS Panels Installed)	24.25"	29.5"	18.25"
ITD1327 (R-L)	Storage™ Fender 24.25" (With SS Panels Installed, Specify Right or Left Fender)	24.25"	29.5"	18.25"
Replacement Parts for 16.75" Storage™ Fenders				
ITD1332 (R-L)	16.75" Stainless-Steel Panel (Specify Right or Left Fender)	16.75"	22"	18.25"
ITD2328	Storage™ Fender 16.75" (Includes 1R & 1L Fender with SS Panels Installed)	16.75"	22"	18.25"
ITD1328 (R-L)	Storage™ Fender 16.75" (With SS Panels Installed, Specify Right or Left Fender)	16.75"	22"	18.25"
General Replacement Parts				
ITD7117	Rubber Guard Foral Storage Fenders			
ITD6331	Rubber Guard Backing Plate for all Storage Fenders			

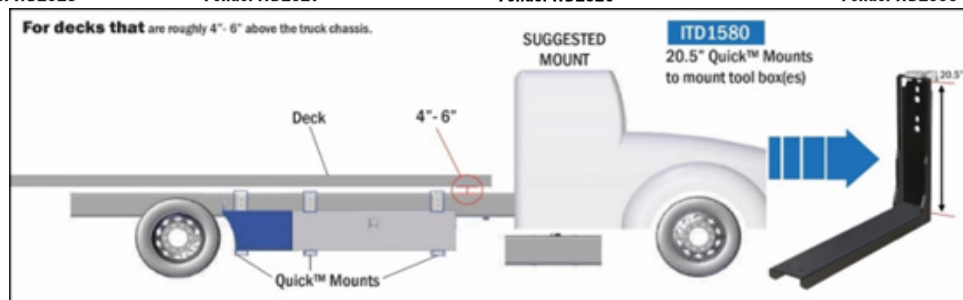


16.75" Storage™
Fender ITD2328

24.25" Storage™
Fender ITD2327

34.75" Storage™
Fender ITD2329

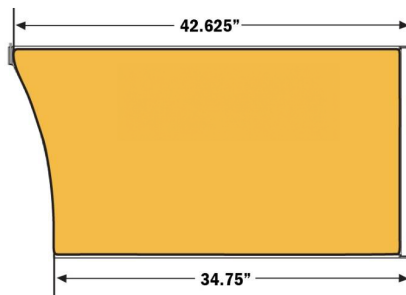
42.75" Storage™
Fender ITD2333



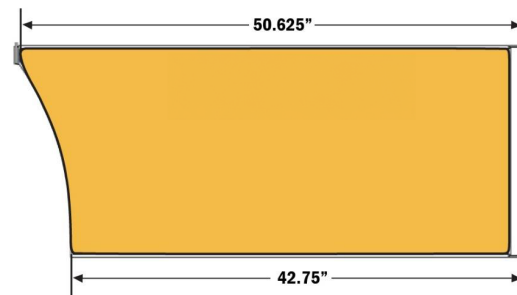
STORAGE™ FENDERS

Storage™ Fenders to Choose From:

Storage™ Fenders for use with 18.5" Quick™ Mount (ITD1588)				
PART #	DESCRIPTION	BOTTOM	TOP	HEIGHT
Replacement Parts for 42.75" Storage™ Fenders				
ITD4622 (R-L)	42.75" Stainless-Steel Panel (Specify Right or Left Fender)	42.75"	50.625"	18.25"
ITD2591	Storage™ Fender Set 42.75" (Includes 1R & 1L Fender with SS Panels Installed)	42.75"	50.625"	18.25"
ITD1591 (R-L)	Storage™ Fender Set 42.75" (With SS Panels Installed, Specify Right or Left Fender)	42.75"	50.625"	18.25"
Replacement Parts for 34.75" Storage™ Fenders				
ITD4623 (R-L)	34.75" Stainless-Steel Panel (Specify Right or Left Fender)	34.75"	42.625"	18.25"
ITD2592	Storage™ Fender Set 34.75" (Includes 1R & 1L Fender with SS Panels Installed)	34.75"	42.625"	18.25"
ITD1592 (R-L)	Storage™ Fender Set 34.75" (With SS Panels Installed, Specify Right or Left Fender)	34.75"	42.625"	18.25"
General Replacement Parts				
ITD7117	Rubber Guard Foral Storage Fenders			
ITD6331	Rubber Guard Backing Plate for all Storage Fenders			



34.75" Storage™
Fender ITD2592



42.75" Storage™
Fender ITD2591

